



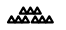




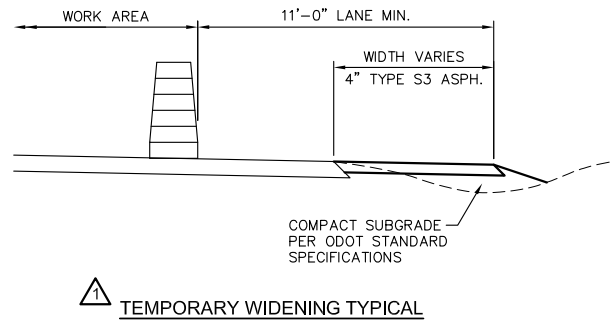
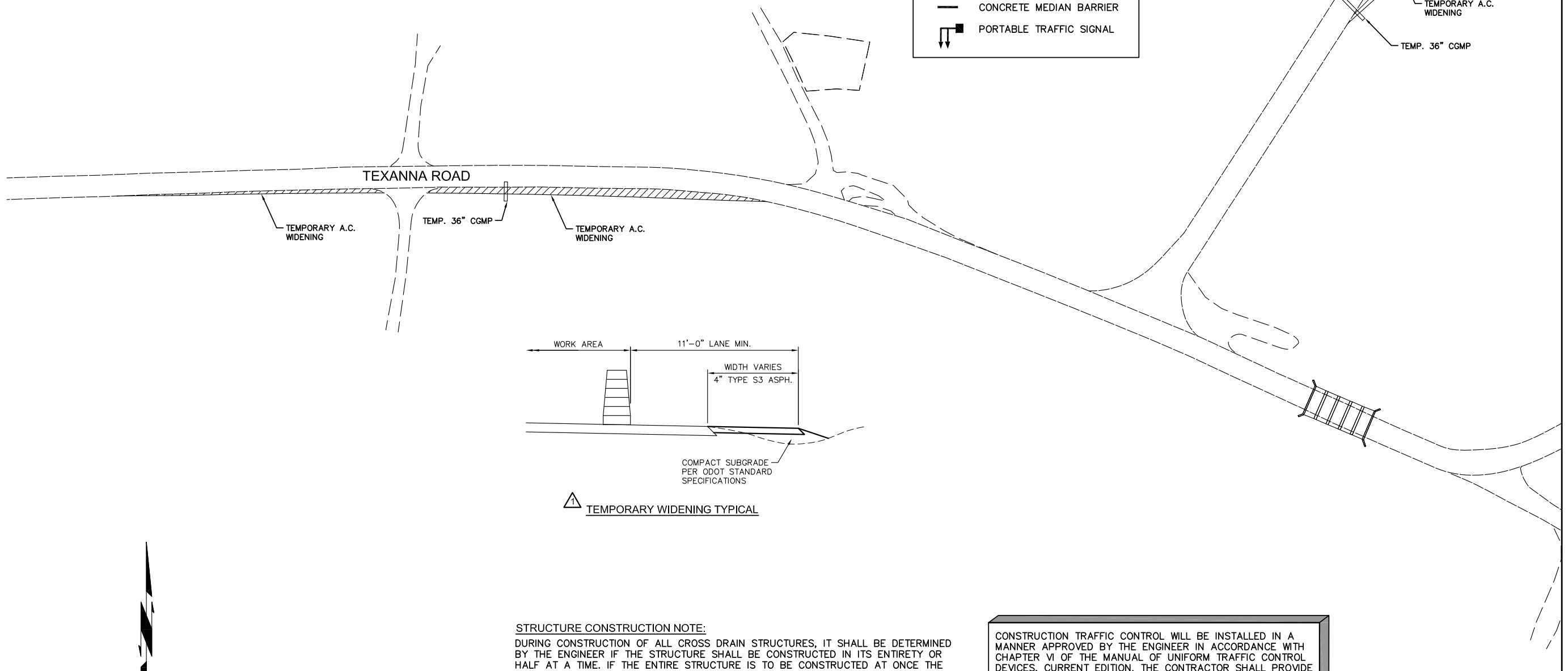
SUGGESTED SEQUENCE OF CONSTRUCTION

PHASE 1

1. THE CONTRACTOR SHALL CONSTRUCT TEMPORARY WIDENING ALONG THE SOUTH SIDE OF TEXANNA ROAD AND ALONG THE EAST SIDE OF EW-114.
2. TEMPORARY 36" CGMPs SHALL BE INSTALLED WHERE NOTED TO FACILITATE DRAINAGE DURING CONSTRUCTION.

REVISIONS		
REV. NO.	DESCRIPTION	DATE
1	ADDED SECTION DETAIL	10/06/17

LEGEND	
	CURRENT WORK ZONE
	TEMP. PAVEMENT REMOVAL
	COMPLETED CONSTRUCTION
	CHANNELIZING DEVICE
	3-TYPE III BARRICADES
	CONCRETE MEDIAN BARRIER
	PORTABLE TRAFFIC SIGNAL

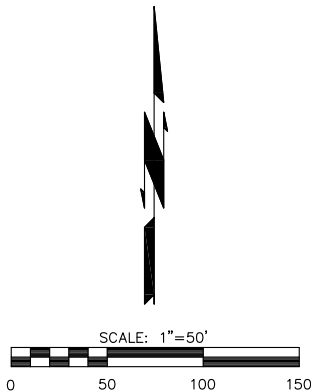


STRUCTURE CONSTRUCTION NOTE:
 DURING CONSTRUCTION OF ALL CROSS DRAIN STRUCTURES, IT SHALL BE DETERMINED BY THE ENGINEER IF THE STRUCTURE SHALL BE CONSTRUCTED IN ITS ENTIRETY OR HALF AT A TIME. IF THE ENTIRE STRUCTURE IS TO BE CONSTRUCTED AT ONCE THE CONTRACTOR SHALL CLOSE THE ROAD IN A MANNER APPROVED BY THE ENGINEER.

PAVEMENT EDGE DROP-OFF NOTE:
 CONTRACTOR TO POST CONSTRUCTION SPEED LIMIT AT 30 MPH AND MEET TREATMENT NO. 3 OF THE ODOT STANDARD PDT-1 (LATEST REVISION). WEDGE TO BE PLACED IMMEDIATELY AFTER STABILIZATION IS COMPLETE.

CONSTRUCTION TRAFFIC CONTROL WILL BE INSTALLED IN A MANNER APPROVED BY THE ENGINEER IN ACCORDANCE WITH CHAPTER VI OF THE MANUAL OF UNIFORM TRAFFIC CONTROL DEVICES, CURRENT EDITION. THE CONTRACTOR SHALL PROVIDE A PROPOSED TRAFFIC CONTROL PLAN FOR APPROVAL BY THE ENGINEER PRIOR TO THE BEGINNING OF WORK.

THE CONTRACTOR MAY SUBMIT IN WRITING A PROPOSED SEQUENCE OF CONSTRUCTION PRIOR TO CONSTRUCTION. THIS SEQUENCE MUST BE IN WRITING AND APPROVED BY THE ENGINEER BEFORE OPERATIONS BEGIN.



DESIGN	GCS		EW115 TEXANNA CREEK	MCINTOSH CO.
DRAWN	GLH		OKLAHOMA DEPARTMENT OF TRANSPORTATION	
CHECKED	GCS			
APPROVED			CONSTRUCTION SEQUENCING PHASE 1 (SHEET 1 OF 2)	
SQUAD	KCS		STATE JOB NO. 29374(04)	SHEET NO. T001

NAF34-CE02-1 - MCINTOSH-BR062-DRAWINGS\AF34-SEQUENCING.DWG - 10/6/2017